



# ARIES<sup>®</sup>

## GBS Assay (RUO)



## Welcome to the New Way to Work

---

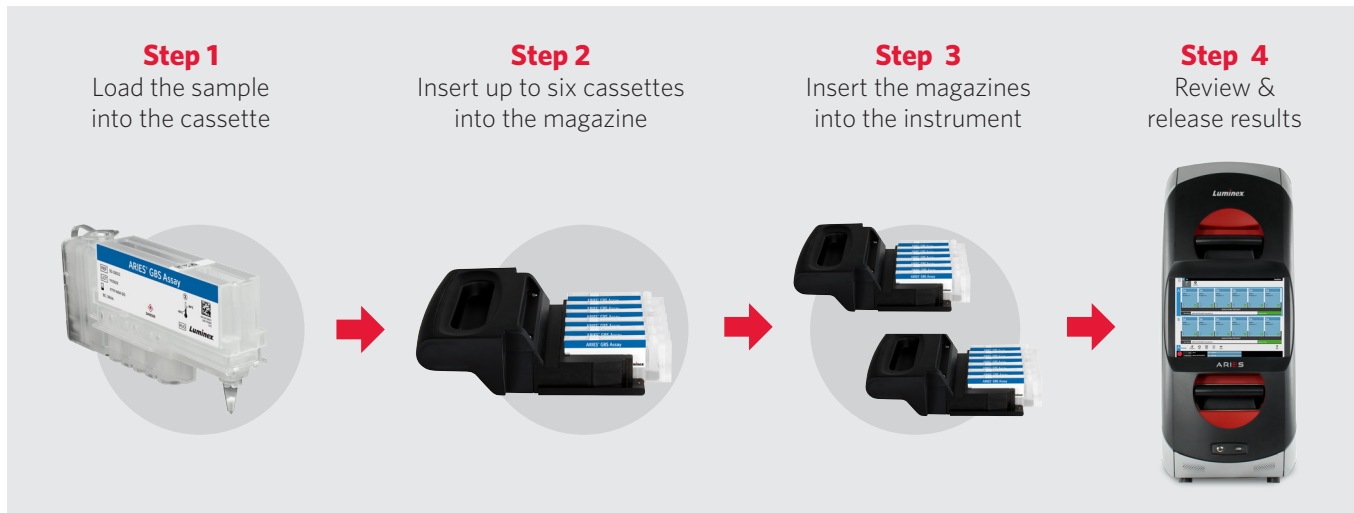
The ARIES<sup>®</sup> GBS Assay is a rapid method for the detection of *Streptococcus agalactiae*, also known as Group B *Streptococcus*, from LIM broth enriched specimens using a sample to answer platform.

- Integrated sample processing control ensures the assay run is successful from extraction through amplification.
- Internal barcode scanning matches samples to cassettes, enabling Position Independent Results no matter where each cassette is placed.
- Reduced data input errors with electronic ordering through bidirectional LIS connectivity.
- Reduced turnaround time with simultaneous STAT and batch testing on a single ARIES<sup>®</sup>.



ARIES<sup>®</sup> is crafted to increase laboratory efficiency, ensure result accuracy, and fit seamlessly into today's lean laboratory.

## Workflow



The operator simply adds specimen to the sample chamber, puts the cassette in the magazine, loads the magazine into ARIES®, and the run will start automatically.

## Ordering Information

Description	Part Number
ARIES® GBS Assay (RUO)	50-10015 (24 tests)
ARIES® GBS Assay Protocol File (RUO)	CN-0328-01 (one time order only)
ARIES® Two Module System (RUO) Includes: Instrument System Operation Manual Two Magazines Quick Guide Two Sample Prep Trays Power Cord Handheld Barcode Scanner	ARIES-M12V1-RUO

**Luminex®**

**support@luminexcorp.com or orders@luminexcorp.com**

This product is for Research Use Only. Not for use in diagnostic procedures. Please contact Luminex at support@luminexcorp.com to obtain the appropriate product information for your country of residence.

The ARIES® System is a class 1(I) laser product. Validation of the LIS compatibility must be performed by the end user.

©2015 Luminex Corporation. All rights reserved. The trademarks mentioned herein are the property of Luminex or their respective owners.

**HEADQUARTERS**

UNITED STATES  
+1.512.219.8020  
info@luminexcorp.com  
www.luminexcorp.com

EUROPE  
+31.73.800.1900  
europe@luminexcorp.com  
www.luminexcorp.eu

CANADA  
+1.416.593.4323  
info@luminexcorp.com  
www.luminexcorp.com

CHINA  
+86.21.802.31150  
chinainfo@luminexcorp.com  
www.luminexcorp.com

JAPAN  
+81.3.5545.7440  
info@jp.luminexcorp.com  
www.luminexcorp.com