



ARIES®

HSV 1&2 Assay (RUO)



Welcome to the New Way to Work

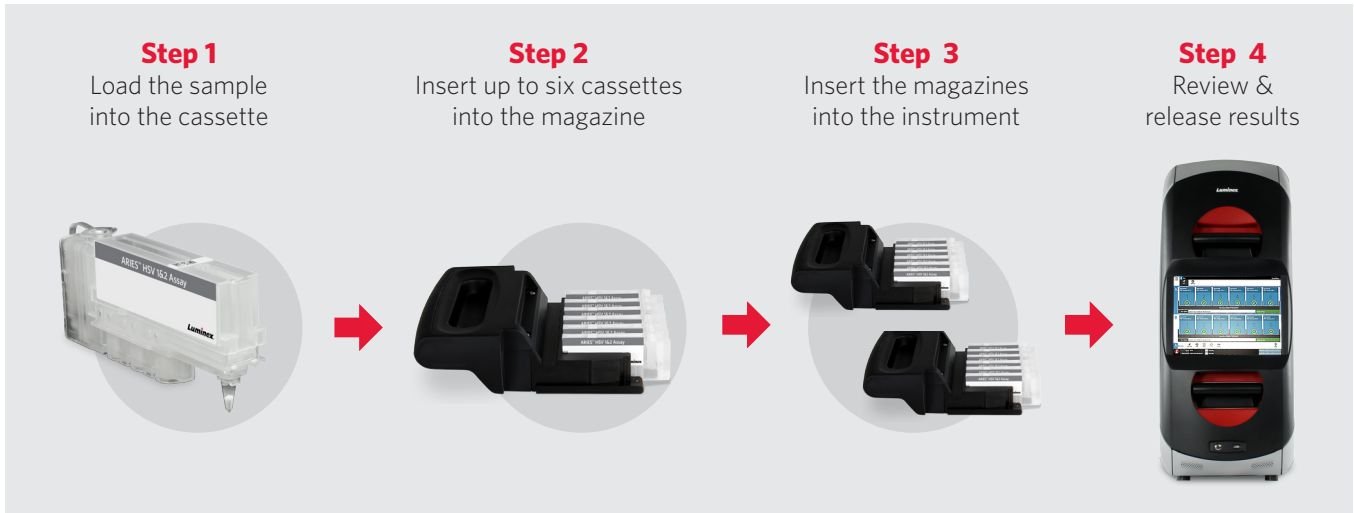
The ARIES® HSV 1&2 Assay is a rapid, accurate method for the detection and differentiation of HSV 1&2 using a sample to answer platform.

- Integrated sample processing control ensures the assay run is successful from extraction through amplification.
- Internal barcode scanning matches samples to cassettes, enabling Position Independent Results no matter where each cassette is placed.
- Reduced data input errors with electronic ordering through bidirectional LIS connectivity.
- Reduced turnaround time with simultaneous STAT and batch testing on a single ARIES.



ARIES is crafted to increase laboratory efficiency, ensure result accuracy, and fit seamlessly into today's lean laboratory.

Workflow



The operator simply adds specimen to the sample chamber, puts the cassette in the magazine, loads the magazine into ARIES, and the run will start automatically.

Ordering Information

ARIES HSV 1&2 Assay (RUO) Includes 24 ARIES HSV 1&2 Assay Cassettes	50-10011 (24 tests)
ARIES HSV 1&2 (RUO) Assay Protocol File Kit	CN-0329-01 (one time order only)
ARIES Two Module System (RUO)	ARIES-M12V1-RUO

The ARIES Two Module System Includes:

Instrument
Two Magazines
Two Sample Prep Trays
Handheld Barcode Scanner
System Operation Manual (RUO)
Quick Guide (RUO)
US Power Cord



support@luminexcorp.com or orders@luminexcorp.com

This product is for Research Use Only. Not for use in diagnostic procedures. Please contact Luminex at support@luminexcorp.com to obtain the appropriate product information for your country of residence.

©2015 Luminex Corporation. All rights reserved. The trademarks mentioned herein are the property of Luminex or their respective owners.

HEADQUARTERS

UNITED STATES
+1.512.219.8020
info@luminexcorp.com
www.luminexcorp.com

EUROPE
+31 (0)73 800 1900
europe@luminexcorp.com
www.luminexcorp.eu

CANADA
+1.416.593.4323
info@luminexcorp.com
www.luminexcorp.com

CHINA
+86.21.802.31150
chinainfo@luminexcorp.com
www.luminexcorp.com

JAPAN
+81.3.5545.7440
infojp@luminexcorp.com
www.luminexcorp.com

SS1320.0615