

**Luminex**

# ARIES<sup>®</sup> M1

Welcome to the New Way to Work



# ARIES®

## Welcome to the New Way to Work

The ARIES® M1 System is crafted to increase laboratory efficiency, ensure result accuracy, and fit seamlessly into today's lean laboratory.

### Designed for Improved Lab Efficiency and Workflow

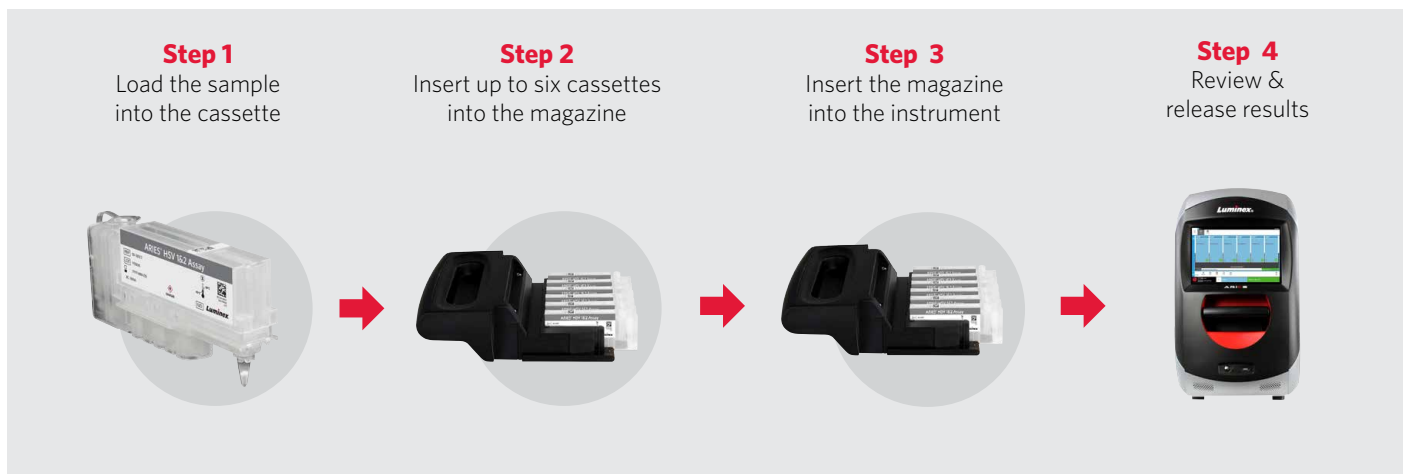
- Universal Assay Protocol enables up to 6 different assays to be run together in a Random Batch
- ARIES® M1 is a perfect fit for main or satellite labs with lower throughput needs
- ARIES® software and user interface allows you to control every aspect of the sample to answer environment in your laboratory
- Simplify your workflow with Auto Run for a true walkaway experience
- Electronic reporting accelerates delivery of results

### Designed for Seamless Integration and Testing Accuracy

- Internal barcode scanning matches samples to cassettes, enabling Position Independent Results no matter where each cassette is placed
- Integrated sample processing control ensures the assay run is successful from extraction through amplification
- Bidirectional LIS connectivity enables electronic ordering\*
- Integrated touchscreen PC eliminates the need for computer peripherals, maximizing valuable bench space

\*Validation of the LIS compatibility must be performed by the user.

### Workflow



## Specifications

Physical Dimensions (Approximate)	39.1 cm x 61.2 cm x 64.5 cm (15.4" x 24.1" x 25.4")						
Weight	35.6 kg (78.5 lb)						
Power Supply	120 volts (US) or 220 volts (EU)						
Startup Time	Less than 5 minutes						
Hands-on Time**	Less than 2 minutes/sample						
Time to Results	Less than 2 hours						
Throughput	6 samples in less than 2 hours 24 results in 8 hours						
Sample Input Volume	200-400 µL						
Processing	One module (1-6 samples/module)						
Data Input	Handheld/internal bar scanning/manual						
PC	Integrated touchscreen						
Operating System	Microsoft Windows Embedded 7						
Consumables	ARIES® assay cassettes						
Ancillary Equipment (optional)	Printer for ARIES® instrument						
Heat Source	Peltier						
Heat Output (BTU)	850						
Operating Temperature	15° C to 35° C (59° F to 95° F)						
Temperature Control	55° C to 95° C (131° F to 203° F) within +/- 1.0° C						
Connectivity	Network and 5 x USB Type-A ports						
Network Settings	Integrates bidirectionally with LIS either through HL7 or CSV file formats						
Detector	Photodiode						
Optical Channels	Channels	1	2	3	4	5	6
	Ex/Em (nm)	390/475	464/517	525/556	557/588	594/624	630/690

\*\*Some assays may require preparation prior to loading the cassette.

## Ordering Information

Product Name	ARIES® M1 System IVD
Part Number	ARIES-M6V1-IVD

### ARIES® System Core Components Included

Instrument
One Magazine
Two Sample Prep Trays
Handheld Barcode Scanner and Stand
System Operation Manual IVD
Quick Guide IVD
Power Cord

### Optional Components

Printer for ARIES® Instrument, Dell C1760nw	CN-PC13-01 (US) For all others, contact your country office for information.
---	---



**support@luminexcorp.com or orders@luminexcorp.com**

For *In Vitro* Diagnostic Use. Products are region specific and may not be approved in some countries/regions. Please contact Luminex at support@luminexcorp.com to obtain the appropriate product information for your country of residence. The ARIES® M1 System is a class 1 (I) laser product.

©2016 Luminex Corporation. All rights reserved. Luminex and ARIES are trademarks of Luminex Corporation, registered in the U.S. and other countries.

HEADQUARTERS

UNITED STATES

+1.512.219.8020  
info@luminexcorp.com  
www.luminexcorp.com

EUROPE

+31.73.800.1900  
europe@luminexcorp.com  
www.luminexcorp.com

CANADA

+1.416.593.4323  
info@luminexcorp.com  
www.luminexcorp.com

CHINA

+86.21.802.31150  
info@cn.luminexcorp.com  
www.luminexcorp.com

JAPAN

+81.3.5545.7440  
info@jp.luminexcorp.com  
www.luminexcorp.com