



# ARIES®

## Bordetella Assay (RUO)



## Welcome to the New Way to Work

---

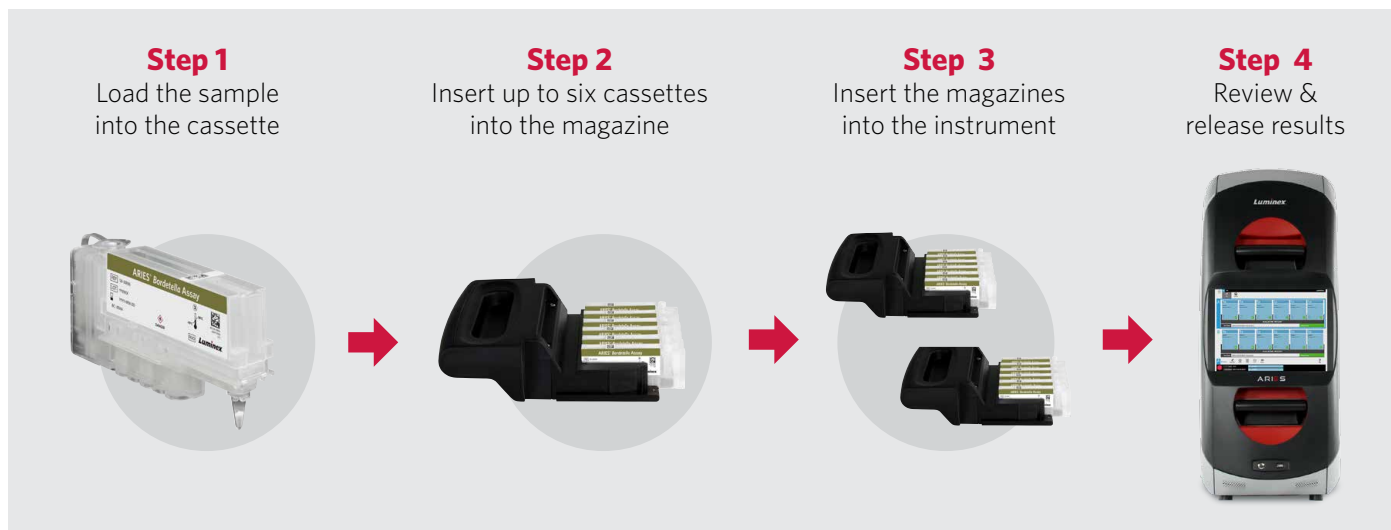
The ARIES® *Bordetella* Assay (RUO)\* is a rapid, accurate method for the detection and differentiation of two key *Bordetella* species. Research laboratories can identify *B. pertussis* and *B. parapertussis* from specimens such as nasopharyngeal swabs (NPS), using a sample to answer platform. Key features include:

- Integrated sample processing control ensures the assay run is successful from extraction through amplification
- Internal barcode scanning matches samples to cassettes, enabling Position Independent Results no matter where each cassette is placed
- Bidirectional LIS connectivity enables electronic ordering and reduces data input errors
- Simultaneous STAT and batch testing on a single ARIES® System enables reduced turnaround times



ARIES® Systems are crafted to increase laboratory efficiency, ensure result accuracy, and fit seamlessly into today's lean laboratory.

## Workflow



The operator simply adds specimen to the sample chamber, puts the cassette in the magazine, loads the magazine into ARIES®, and the run will start automatically.

## Ordering Information

Description	Part Number
ARIES® Bordetella Assay Kit (RUO)*	50-10036 (24 tests)
ARIES® Bordetella Assay Protocol File (RUO)*	CN-0387-01 (one time order only)
ARIES® Two Module System (RUO)* Includes: Instrument System Operation Manual Two Magazines Quick Guide Two Sample Prep Trays Power Cord Handheld Barcode Scanner and Stand	ARIES-M12V1-RUO
ARIES® M1 System (RUO)* Includes: Instrument System Operation Manual One Magazine Quick Guide Two Sample Prep Trays Power Cord Handheld Barcode Scanner and Stand	ARIES-M6V1-RUO

**Luminex**  
complexity simplified.

**orders@luminexcorp.com or support@luminexcorp.com**

\*RUO - For Research Use Only. Not for use in diagnostic procedures. Please contact Luminex at support@luminexcorp.com to obtain the appropriate product information for your country of residence. The ARIES® System is a class 1(I) laser product. Validation of the LIS compatibility must be performed by the end user.

©2016 Luminex Corporation. All rights reserved. Luminex and ARIES are trademarks of Luminex Corporation, registered in the U.S. and other countries..

[www.luminexcorp.com](http://www.luminexcorp.com)

HEADQUARTERS  
UNITED STATES  
+1.512.219.8020  
info@luminexcorp.com

EUROPE  
+31.73.800.1900  
europe@luminexcorp.com

CANADA  
+1.416.593.4323  
info@luminexcorp.com

CHINA  
+86.21.802.31150  
info@luminexcorp.com

JAPAN  
+81.3.5545.7440  
info@luminexcorp.com

SS1684.0916